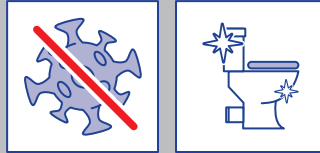


Safe. Simple. Effective.

SANITARY



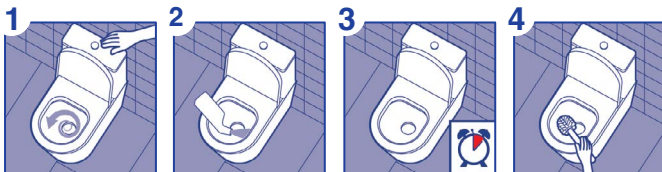
P&G Professional B3 Disinfecting Toilet Bowl Cleaner 750 ml

Effective cleaning and disinfection of
toilet bowls and urinals

🎯 KEY BENEFITS

- Kills 99.99% of bacteria and enveloped viruses*
- Cleans and disinfects in depth and in one go
- Removes deposits, dirt and lime scale from toilet bowls and urinals
- Prevents lime scale build up
- Delivers a long-lasting shine and fresh perfume

🔄 PROTOCOL OF USE FOR CLEANING AND DISINFECTING



1 Flush toilets and urinals.

2 Apply toilet bowl cleaner around bowl and under rim of toilet or urinal

3 Leave to act for required contact time.

4 Scrub interior of toilet bowl/urinal with toilet brush and flush.

every **experience** counts.™

P&G
Professional

Safe. Simple. Effective.



SANITARY / P&G PROFESSIONAL B3 DISINFECTING TOILET BOWL CLEANER 750ML

DISINFECTION TABLE

*Recommend 15 seconds contact time to kill bacteria and enveloped viruses (including coronaviruses, SARS-CoV-2, and variations of SARS-CoV-2).

Efficacy	Norm	Time	Condi-tions	Strains	Concentra-tion
Bactericide	EN1276	15sec	clean	Pseudomonas aeruginosa, Escherichia coli, Staphylococcus aureus, Enterococcus hirae	neat
	EN1276	5min	dirty	Pseudomonas aeruginosa, Escherichia coli, Staphylococcus aureus, Enterococcus hirae	neat
	EN13697	5min	dirty	Pseudomonas aeruginosa, Escherichia coli, Staphylococcus aureus, Enterococcus hirae	neat
Yeast	EN13697	10min	dirty	Candida albicans	neat
Yeast	EN1650	10min	dirty	Candida albicans	neat
Virucide	EN14476	5min	dirty	Vaccinia virus	neat
	EN14476	15sec	clean	Vaccinia virus	neat
	EN16777	5min	dirty	Vaccinia virus	neat

All testing has been conducted at external independent laboratories.

SUSTAINABILITY

- All surfactants break down both quickly and completely into harmless material such as CO2 and water.
- Recyclable bottle, does not contain bleach.
- Manufactured with 100% purchased renewable electricity

TECHNICAL DESCRIPTION

EAN code:	08006540477137
Appearance:	Green liquid
Smell:	Perfumed
pH (neat)	2.20
Size:	750ml

SAFETY INSTRUCTIONS

Please make sure your employees read and understood the product label and your COSHH assessment (Chemical Risk Assessment in EU) before using this product. The label contains directions for use and both label and SDS contain hazard warnings, precautionary statements, first aid procedures and storage information. SDS are available on-line at our website www.pgpro-msds.com or can be provided to you via the call center.

WHERE TO USE

- For daily cleaning of toilets and urinals.
- Safe to use on acid resistant surfaces like porcelain, plastic and ceramic.

WHERE NOT TO USE

- Avoid prolonged contact with painted or polished surfaces, aluminum, marble.
- Do not use on colored or damaged porcelain.
- If in doubt, first test product on a small inconspicuous area.

every **experience** counts.™

P&G
Professional